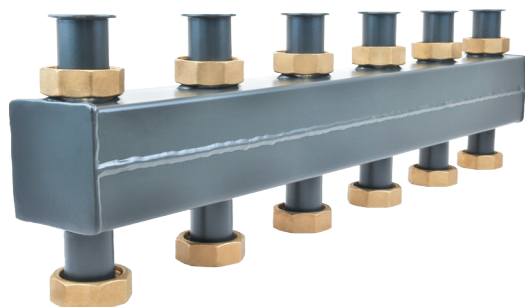


Manifolds

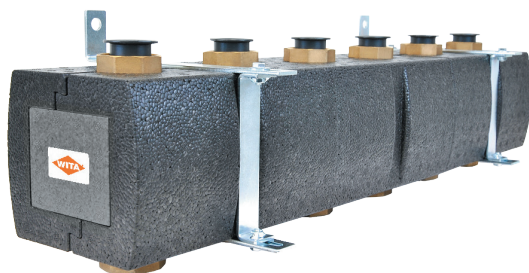
and more / Manifolds 

DN 25 | DN 32



Product description

The DN25 and DN32 heating circuit manifolds are used for space-saving and rapid installation of the heating circuit system. After connecting the heat generator, up to seven heating circuits (direct, mixed) can be installed on the manifold with a flat seal, depending on the manifold design. The manifold is used for heating systems up to 110kW/270kW heat load. The manifold is supplied with an adjustable wall bracket and screw connection for convenient wall mounting.



Technical data

Nominal diameter
Connection dimensions
Center distance heating flow and return flow
Dimensions (H x W x L)
Materials
Field of application
Operating pressure

DN 25

DN 25
1 ½" Rp
125 mm
2+0, 2+1: 190 mm x 160 mm x 500mm 3+0, 3+2: 190 mm x 160 mm x 750 mm 4+0, 4+3: 190 mm x 160 mm x 1000 mm
EPP, brass, steel, EPDM seals
110 kW, up to 110 °C, Kvs 13 m³/h, 110kW
max. 6 bar

DN 32

DN 32
thermo-tap side top - 2" Rp producer side bottom 1 ½" G
125 mm
2+0, 2+1: 190 mm x 160 mm x 500 mm 3+0, 3+1: 190 mm x 160 mm x 750 mm 4+0, 4+1: 190 mm x 160 mm x 1000 mm
EPP, brass, steel, EPDM Seals
270 kW, up to 110 °C, Kvs 29.3 m³/h
max. 10 bar