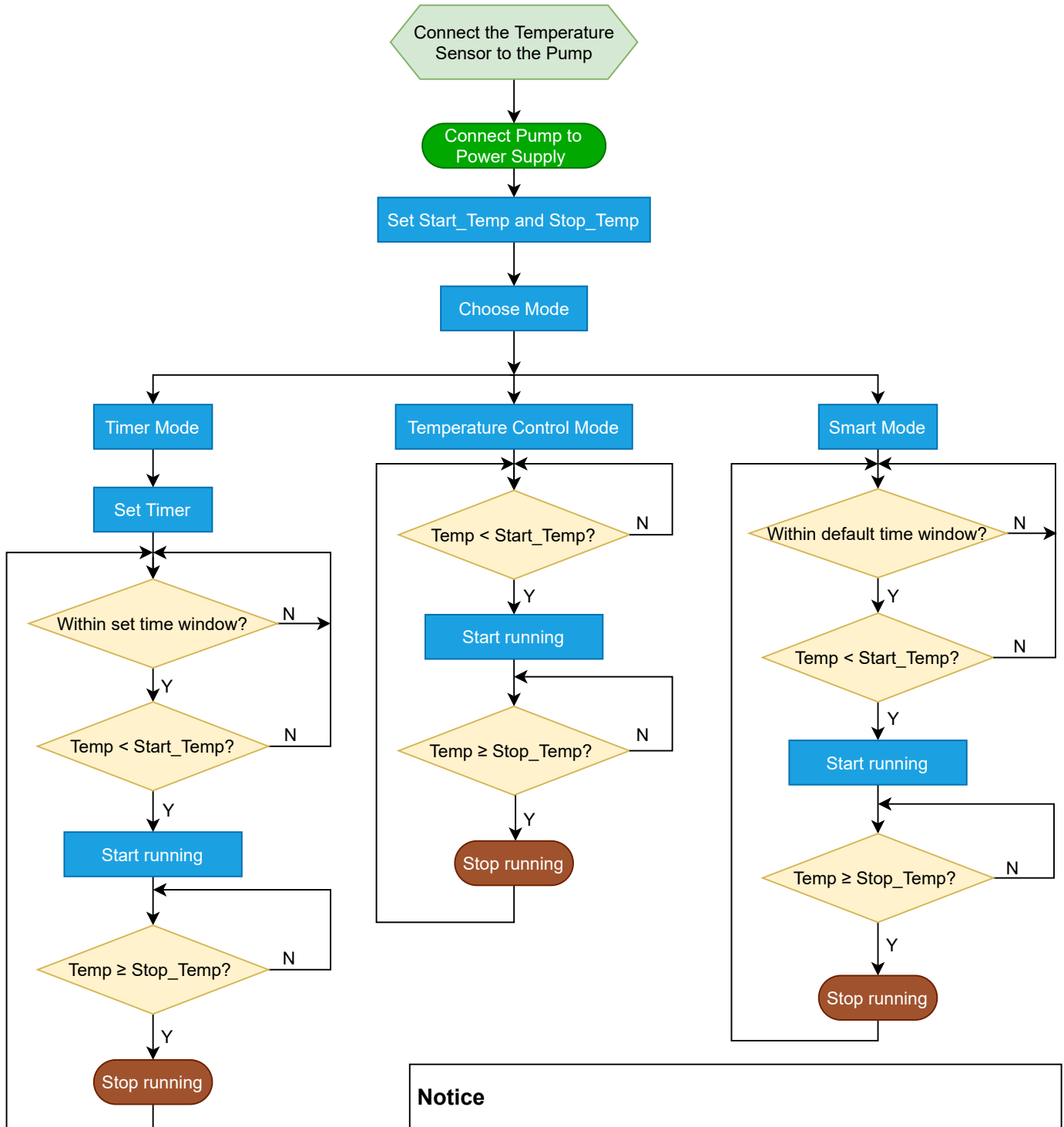




WITA go.future Z+ Program Flow Chart



Notice

1. After the pump has stopped automatically, there is a 20 seconds delay before the pump starts again.
2. If the start conditions are not met, the pump could still be started by pressing the "ok" button and this will last for 5 minutes. The pump will run for 5 minutes and can be restarted at any time for another 5 minutes.
3. In Timer mode, the pump will run max. 30 minutes from the set starting time if the temperature has not reached Stop_Temp in the set time window.